

## TEST REPORT

No. : GZIN2504000549CM02\_EN

Date : 2025-05-08

Page: 1 of 3



CUSTOMER NAME: VEMY QUARTZ SURFACE CO., LTD  
ADDRESS: NO.1 HUIYIN ROAD, BAINI TOWN, SANSHUI DISTRICT, FOSHAN CITY, GUANGDONG PROVINCE, CHINA

Sample Name : engineered quartz

Above information and sample(s) was/were submitted and confirmed by the client. SGS, however, assumes no responsibility to verify the accuracy, adequacy and completeness of the sample information provided by client.

\*\*\*\*\*

Date of Receipt : 2025-04-03  
Testing Period : 2025-04-03 ~ 2025-05-08  
Test result(s) : For further details, please refer to the following page(s)  
(Unless otherwise stated the results shown in this test report refer only to the sample(s) tested)

Signed for  
SGS-CSTC Standards Technical  
Services Co., Ltd. Guangzhou  
Branch.

Toby Yang  
Authorized signatory



Unless otherwise agreed in writing, this document is issued by the Company subject to its General Conditions of Service printed overleaf, available on request or accessible at <https://www.sgs.com/en/Terms-and-Conditions>. Attention is drawn to the limitation of liability, indemnification and jurisdiction issues defined therein. Any holder of this document is advised that information contained hereon reflects the Company's findings at the time of its intervention only and within the limits of Client's instructions, if any. The Company's sole responsibility is to its Client and this document does not exonerate parties to a transaction from exercising all their rights and obligations under the transaction documents. This document cannot be reproduced except in full, without prior written approval of the Company. Any unauthorized alteration, forgery or falsification of the content or appearance of this document is unlawful and offenders may be prosecuted to the fullest extent of the law. Unless otherwise stated the results shown in this test report refer only to the sample(s) tested and such sample(s) are retained for 30 days only.

Attention: To check the authenticity of testing / inspection report & certificate, please contact us at telephone: (86-755) 8307 1443, or email: [CN.Doccheck@sgs.com](mailto:CN.Doccheck@sgs.com)

Room 101, Building 3, No.1501, Kaichuang Avenue, Huangpu District, Guangzhou, Guangdong Province, China 510760  
中国·广东·广州市黄埔区开创大道1501号3栋101房 邮编: 510760

t (86-20) 82155688 www.sgs.com.cn  
t (86-20) 82155688 sgs.china@sgs.com

## TEST REPORT

No. : GZIN2504000549CM02\_EN

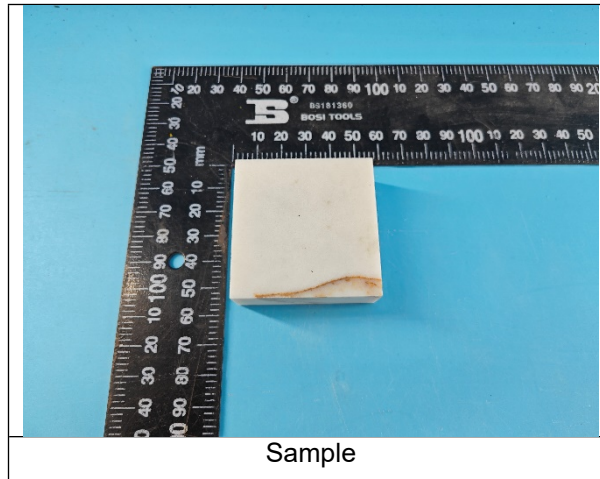
Date : 2025-05-08

Page: 2 of 3

### Summary of Results:

No.	Test Item	Test Method	Result
1	Tensile adhesion strength	With reference to EN 15286:2013 Section 4.2.10 & EN 1348:2007 Section 8.2 and client's requirement	1.8 MPa

### Original Sample Photo:



## TEST REPORT

No. : GZIN2504000549CM02\_EN

Date : 2025-05-08

Page: 3 of 3

Test Item: Tensile adhesion strength

Sample Description: See photo

Test Method:

With reference to EN 15286:2013 Section 4.2.10 & EN 1348:2007 Section 8.2 and client's requirement

Test Condition:

Type of adhesive: cementitious adhesives (provided by client)

Conditioning: ①27d in standard condition → ②24h in standard condition after bonding pulled-head plates

Testing Speed: 250 N/s

Test Result:

Test item	Test Result
Tensile adhesion strength	1.8 MPa

Note: Standard condition: (23± 2)°C, (50±5)%RH.

Appendix information:

The test report shall only be used for clients' scientific research, teaching, internal quality control, product research and development, etc., and just for internal reference.

\*\*\*\*\*End of report\*\*\*\*\*

## TEST REPORT

No. : GZIN2504000706CM01\_EN

Date : 2025-05-15

Page: 1 of 6



CUSTOMER NAME: VEMY QUARTZ SURFACE CO., LTD  
ADDRESS: NO.1 HUIYIN ROAD, BAINI TOWN, SANSHUI DISTRICT, FOSHAN CITY, GUANGDONG PROVINCE, CHINA

Sample Name : engineered quartz

Above information and sample(s) was/were submitted and confirmed by the client. SGS, however, assumes no responsibility to verify the accuracy, adequacy and completeness of the sample information provided by client.

\*\*\*\*\*

Date of Receipt : 2025-04-27  
Testing Period : 2025-04-27 ~ 2025-05-15  
Test result(s) : For further details, please refer to the following page(s)  
(Unless otherwise stated the results shown in this test report refer only to the sample(s) tested)

Signed for  
SGS-CSTC Standards Technical  
Services Co., Ltd. Guangzhou  
Branch.

Ben Xue  
Authorized signatory



Unless otherwise agreed in writing, this document is issued by the Company subject to its General Conditions of Service printed overleaf, available on request or accessible at <https://www.sgs.com/en/Terms-and-Conditions>. Attention is drawn to the limitation of liability, indemnification and jurisdiction issues defined therein. Any holder of this document is advised that information contained hereon reflects the Company's findings at the time of its intervention only and within the limits of Client's instructions, if any. The Company's sole responsibility is to its Client and this document does not exonerate parties to a transaction from exercising all their rights and obligations under the transaction documents. This document cannot be reproduced except in full, without prior written approval of the Company. Any unauthorized alteration, forgery or falsification of the content or appearance of this document is unlawful and offenders may be prosecuted to the fullest extent of the law. Unless otherwise stated the results shown in this test report refer only to the sample(s) tested and such sample(s) are retained for 30 days only.

Attention: To check the authenticity of testing / inspection report & certificate, please contact us at telephone: (86-755) 8307 1443, or email: [CN.Doccheck@sgs.com](mailto:CN.Doccheck@sgs.com)

Room 101, Building 3, No.1501, Kaichuang Avenue, Huangpu District, Guangzhou, Guangdong Province, China 510760  
中国·广东·广州市黄埔区开创大道1501号3栋101房 邮编: 510760

t (86-20) 82155688 www.sgs.com.cn  
t (86-20) 82155688 sgs.china@sgs.com

# TEST REPORT

No. : GZIN2504000706CM01\_EN

Date : 2025-05-15

Page: 2 of 6

## I. Test conducted

This test is conducted as per EN 13501-1:2018 Fire classification of construction products and building elements — Part 1: Classification using data from reaction to fire tests. And the test methods as following:

1. EN 13823:2020+A1:2022 Reaction to fire tests for building products - Building products excluding floorings exposed to the thermal attack by a single burning item.
2. EN ISO 11925-2:2020 Reaction to fire tests — Ignitability of products subjected to direct impingement of flame — Part 2: Single-flame source test.

## II. Details of classified product

Sample Description	Board
Color	See photos
Thickness	22mm
Area density	47.8kg/m <sup>2</sup>

### Mounting and fixing:

Specimen that was free standing and had no substrate and with no ventilated cavity should be tested at a distance of at least 80 mm from the backing board. There was no joint between specimens.

## III. Test results

Test methods	Parameter	Number of tests	Results
EN 13823	FIGRA <sub>0.2MJ</sub> (W/s)	3	52.6
	FIGRA <sub>0.4MJ</sub> (W/s)		52.6
	Whether lateral flame spread (LFS) to the edge of specimen (Yes/No)		No
	THR <sub>600s</sub> (MJ)		3.4
	SMOGRA (m <sup>2</sup> /s <sup>2</sup> )		12.0
	TSP <sub>600s</sub> (m <sup>2</sup> )		82.6
	Flaming particles or droplets (Yes/No)		No
EN ISO 11925-2 Exposure = 30 s	Fs≤150mm within 60 s (Yes/No)	12	Yes
	Ignition of the filter paper (Yes/No)		No

### Note:

FIGRA<sub>0.2MJ</sub> - Fire growth rate index at THR threshold of 0,2 MJ [W/s]

FIGRA<sub>0.4MJ</sub> - Fire growth rate index at THR threshold of 0,4 MJ [W/s]

THR<sub>600s</sub> -Total heat release within 600 s [MJ]

SMOGRA - Smoke growth rate [m<sup>2</sup>/s<sup>2</sup>]

TSP<sub>600s</sub> - Total smoke production within 600 s [m<sup>2</sup>]



Unless otherwise agreed in writing, this document is issued by the Company subject to its General Conditions of Service printed overleaf, available on request or accessible at <https://www.sgs.com/en/Terms-and-Conditions>. Attention is drawn to the limitation of liability, indemnification and jurisdiction issues defined therein. Any holder of this document is advised that information contained hereon reflects the Company's findings at the time of its intervention only and within the limits of Client's instructions, if any. The Company's sole responsibility is to its Client and this document does not exonerate parties to a transaction from exercising all their rights and obligations under the transaction documents. This document cannot be reproduced except in full, without prior written approval of the Company. Any unauthorized alteration, forgery or falsification of the content or appearance of this document is unlawful and offenders may be prosecuted to the fullest extent of the law. Unless otherwise stated the results shown in this test report refer only to the sample(s) tested and such sample(s) are retained for 30 days only.

Attention: To check the authenticity of testing /inspection report & certificate, please contact us at telephone: (86-755) 8307 1443, or email: [CN.Doccheck@sgs.com](mailto:CN.Doccheck@sgs.com)

Room 101, Building 3, No.1501, Kaichuang Avenue, Huangpu District, Guangzhou, Guangdong Province, China 510760  
中国·广东·广州市黄埔区开创大道1501号3栋101房 邮编: 510760

t (86-20) 82155688 www.sgsgroup.com.cn  
t (86-20) 82155688 sgs.china@sgs.com



## TEST REPORT

No. : GZIN2504000706CM01\_EN

Date : 2025-05-15

Page: 3 of 6

### IV. Classification and field of application

#### a) Reference of classification

This classification has been carried out in accordance with **EN 13501-1:2018**.

#### b) Classification

The product, engineered quartz (as described by the sponsor), in relation to its reaction to fire behaviour is classified:

Fire behaviour		Smoke production			Flaming droplets
<b>B</b>	—	<b>s</b>	<b>2</b>	,	<b>d</b> <b>0</b>

**Reaction to fire classification: B—s2, d0**

**Remark:** The classes with their corresponding fire performance are given in annex A.

#### c) Field of application

This classification is valid for the following product parameters:

--- Characteristics as described in section II of this test reports.

This classification is valid for the following end use applications:

--- Without any substrates

--- Free standing

--- No joint

#### Limitations

This classification document does not represent type approval or certification of the product.

#### Warning:

The test laboratory has, therefore, played no part in sampling the product for the test, although it holds appropriate references, supplied by the manufacturer, to provide for traceability of the samples tested.

#### Statement:

This declaration of conformity is only based on the result of this laboratory activity, the impact of the uncertainty of the results was not included.



Unless otherwise agreed in writing, this document is issued by the Company subject to its General Conditions of Service printed overleaf, available on request or accessible at <https://www.sgs.com/en/Terms-and-Conditions>. Attention is drawn to the limitation of liability, indemnification and jurisdiction issues defined therein. Any holder of this document is advised that information contained hereon reflects the Company's findings at the time of its intervention only and within the limits of Client's instructions, if any. The Company's sole responsibility is to its Client and this document does not exonerate parties to a transaction from exercising all their rights and obligations under the transaction documents. This document cannot be reproduced except in full, without prior written approval of the Company. Any unauthorized alteration, forgery or falsification of the content or appearance of this document is unlawful and offenders may be prosecuted to the fullest extent of the law. Unless otherwise stated the results shown in this test report refer only to the sample(s) tested and such sample(s) are retained for 30 days only.

Attention: To check the authenticity of testing /inspection report & certificate, please contact us at telephone: (86-755) 8307 1443, or email: [CN.Doccheck@sgs.com](mailto:CN.Doccheck@sgs.com)

Room 101, Building 3, No.1501, Kaichuang Avenue, Huangpu District, Guangzhou, Guangdong Province, China 510760  
中国·广东·广州市黄埔区开创大道1501号3栋101房 邮编: 510760

t (86-20) 82155688 www.sgs.com.cn  
t (86-20) 82155688 sgs.china@sgs.com

# TEST REPORT

No. : GZIN2504000706CM01\_EN

Date : 2025-05-15

Page: 4 of 6

## Annex A

Classes of reaction to fire performance for construction products excluding floorings and linear pipe thermal insulation products

Class	Test method(s)		Classification criteria	Additional classification
A1	EN ISO 1182 <sup>a</sup>	and	$\Delta T \leq 30^{\circ}\text{C}$ , and $\Delta m \leq 50\%$ , and $t_f = 0$ (i.e. no sustained flaming)	-
	EN ISO 1716		$PCS \leq 2.0\text{MJ/kg}$ <sup>a</sup> and $PCS \leq 2.0\text{MJ/kg}$ <sup>b,c</sup> and $PCS \leq 1.4\text{MJ/m}^2$ <sup>d</sup> and $PCS \leq 2.0\text{MJ/kg}$ <sup>e</sup>	-
A2	EN ISO 1182 <sup>a</sup>	and	$\Delta T \leq 50^{\circ}\text{C}$ , and $\Delta m \leq 50\%$ , and $t_f \leq 20\text{ s}$	-
	or			
	EN ISO 1716		$PCS \leq 3.0\text{MJ/kg}$ <sup>a</sup> and $PCS \leq 4.0\text{MJ/m}^2$ <sup>b</sup> and $PCS \leq 4.0\text{MJ/m}^2$ <sup>d</sup> and $PCS \leq 3.0\text{MJ/kg}$ <sup>e</sup>	-
	EN 13823		$FIGRA_{0.2\text{MJ}} \leq 120\text{W/s}$ and $LFS < \text{edge of specimen}$ and $THR_{600\text{s}} \leq 7.5\text{MJ}$	Smoke production <sup>f</sup> and Flaming droplets/particles <sup>g</sup>
B	EN 13823	and	$FIGRA_{0.2\text{MJ}} \leq 120\text{W/s}$ and $LFS < \text{edge of specimen}$ and $THR_{600\text{s}} \leq 7.5\text{MJ}$	Smoke production <sup>f</sup> and Flaming droplets/particles <sup>g</sup>
	EN ISO 11925-2 <sup>i</sup> Exposure = 30s		$F_s \leq 150\text{mm}$ within 60s	
C	EN 13823	and	$FIGRA_{0.4\text{MJ}} \leq 250\text{W/s}$ and $LFS < \text{edge of specimen}$ and $THR_{600\text{s}} \leq 15\text{MJ}$	Smoke production <sup>f</sup> and Flaming droplets/particles <sup>g</sup>
	EN ISO 11925-2 <sup>i</sup> Exposure = 30s		$F_s \leq 150\text{mm}$ within 60 s	
D	EN 13823	and	$FIGRA_{0.4\text{MJ}} \leq 750\text{W/s}$	Smoke production <sup>f</sup> and Flaming droplets/particles <sup>g</sup>
	EN ISO 11925-2 <sup>i</sup> Exposure = 30s		$F_s \leq 150\text{mm}$ within 60 s	
E	EN ISO 11925-2 <sup>i</sup> Exposure = 15s		$F_s \leq 150\text{mm}$ within 20 s	flaming droplets/particles <sup>h</sup>
F	EN ISO 11925-2 <sup>i</sup> Exposure = 15 s		$F_s > 150\text{mm}$ within 20 s	

## TEST REPORT

No. : GZIN2504000706CM01\_EN

Date : 2025-05-15

Page: 5 of 6

- <sup>a</sup> For homogeneous products and substantial components of non-homogeneous products.
- <sup>b</sup> For any external non-substantial component of non-homogeneous products.
- <sup>c</sup> Alternatively, any external non-substantial component having a PCS  $\leq 2,0 \text{ MJ/m}^2$ , provided that the product satisfies the following criteria of EN 13823: FIGRA  $\leq 20 \text{ W/s}$ , and LFS < edge of specimen, and THR<sub>600s</sub>  $\leq 4,0 \text{ MJ}$ , and s1, and d0.
- <sup>d</sup> For any internal non-substantial component of non-homogeneous products.
- <sup>e</sup> For the product as a whole.
- <sup>f</sup> s1 = SMOGRA  $\leq 30 \text{ m}^2/\text{s}^2$  and TSP<sub>600s</sub>  $\leq 50 \text{ m}^2$ ; s2 = SMOGRA  $\leq 180 \text{ m}^2/\text{s}^2$  and TSP<sub>600s</sub>  $\leq 200 \text{ m}^2$ ; s3 = not s1 or s2
- <sup>g</sup> d0 = No flaming droplets/ particles in EN 13823 within 600 s;  
d1 = no flaming droplets/ particles persisting longer than 10 s in EN 13823 within 600 s;  
d2 = not d0 or d1.
- Ignition of the paper in EN ISO 11925-2 results in a d2 classification.
- <sup>h</sup> Pass = no ignition of the paper (no classification);  
Fail = ignition of the paper (d2 classification).
- <sup>i</sup> Under conditions of surface flame attack and, if appropriate to the end-use application of the product, edge flame attack.



Unless otherwise agreed in writing, this document is issued by the Company subject to its General Conditions of Service printed overleaf, available on request or accessible at <https://www.sgs.com/en/Terms-and-Conditions>. Attention is drawn to the limitation of liability, indemnification and jurisdiction issues defined therein. Any holder of this document is advised that information contained hereon reflects the Company's findings at the time of its intervention only and within the limits of Client's instructions, if any. The Company's sole responsibility is to its Client and this document does not exonerate parties to a transaction from exercising all their rights and obligations under the transaction documents. This document cannot be reproduced except in full, without prior written approval of the Company. Any unauthorized alteration, forgery or falsification of the content or appearance of this document is unlawful and offenders may be prosecuted to the fullest extent of the law. Unless otherwise stated the results shown in this test report refer only to the sample(s) tested and such sample(s) are retained for 30 days only.

Attention: To check the authenticity of testing /inspection report & certificate, please contact us at telephone: (86-755) 8307 1443, or email: [CN.Doccheck@sgs.com](mailto:CN.Doccheck@sgs.com)

Room 101, Building 3, No.1501, Kaichuang Avenue, Huangpu District, Guangzhou, Guangdong Province, China 510760  
中国·广东·广州市黄埔区开创大道1501号3栋101房 邮编: 510760

t (86-20) 82155688 www.sgsgroup.com.cn  
t (86-20) 82155688 sgs.china@sgs.com



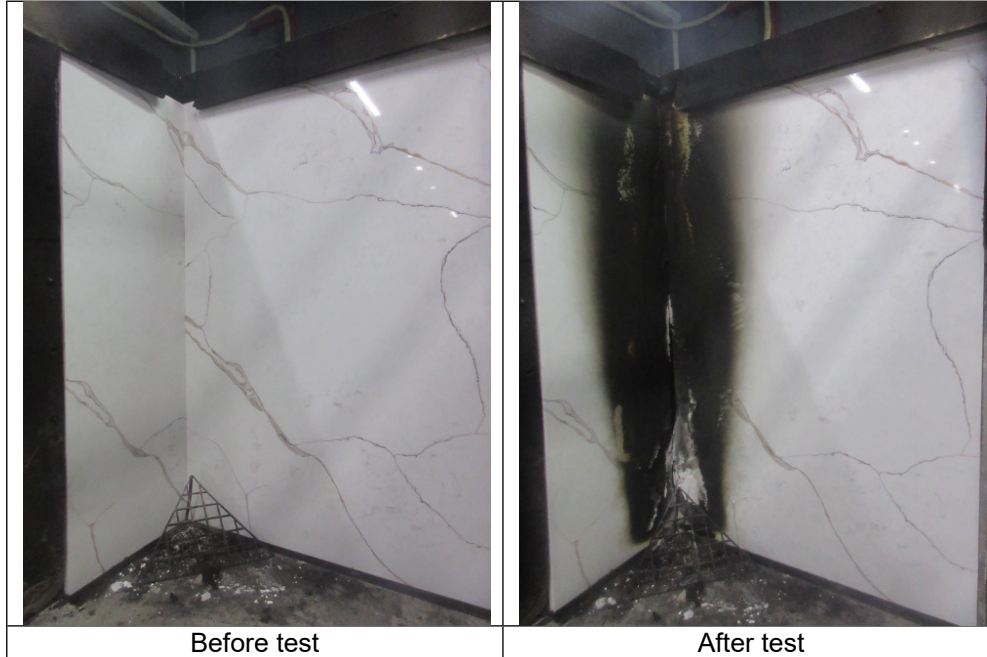
## TEST REPORT

No. : GZIN2504000706CM01\_EN

Date : 2025-05-15

Page: 6 of 6

### Photo Appendix:



SGS authenticate the photo on original report only

\*Test Item was carried out by other laboratory in SGS group.

### Appendix information:

The test report shall only be used for clients' scientific research, teaching, internal quality control, product research and development, etc., and just for internal reference.

\*\*\*\*\*End of report\*\*\*\*\*